

ProSeries[®] Tax Software

Professional
Getting Started Guide
Tax Year 2013

New for Tax Year 2013

Save more time this season with expanded e-filing, more forms and new and improved features.

More client e-files in more states:

Get more of the states and forms you asked for, making it easier to stay in compliance.

- TX LLC e-file for 1040
- NY City e-file for 1040 for returns and extensions
- KS 1120/1120S/1065
- IA 1120/1120S/1065
- MT 1120/1120S/1065
- OK 1120/1120S
- UT 1120/1120S/1065 and extensions
- NJ 1120/1120S
- VA 1065/1120S

More of the most requested forms:

- IN 1041 returns for print
- KY 1041 returns for print
- AL 1041 returns for print

Expanded Federal 1041 forms content to support modernized e-file

Beginning in Tax Year 2013 Federal 1041 returns will now support year round and multi-year e-file.¹

Improved! Print Preview and Printed PDFs

Now you can see a print preview of Forms that are selected for printing, as well as for entire returns. Plus, you can open and view your PDF directly from within ProSeries.

New! Password protected files

Have greater security by emailing password protected client files.

Enhanced Data Encryption

We've stepped up our data encryption technology to help add more protection for your information.

Helpful tools to simplify and automate tasks:²

- **Quick Employer Forms:** Create 1099 and W-2 forms for your clients in 3 easy steps. Just answer a few questions, review your forms, and you're ready to e-file to the IRS or Social Security Administration.
- **ProSeries QuickCollect:** End collection hassles by giving your clients the option to pay you out of their refund.

Top time savers:²

- **Automatic Data Import:** Use ProSeries Tax Import to automatically import data from scanned tax form pdfs and financial institutions directly into the 1040 return in ProSeries.
- **Tax Research:** ProSeries Tax Research will allow you to find the best possible answer quickly using Google search on content by BNA.
- **Document Management:** Let ProSeries Document Management Systems make it easy to electronically store and retrieve any type of client data for you.

Client Management Utilities:²

Use ProSeries Plus to keep your tax clients coming back. These three client-focused tools are designed to help you collaborate more effectively with clients—and help show them your true value as a tax professional.

1. Customers with an active tax year 2013 license can e-file Individual and Business federal and state returns for current and prior years supported, up to 3 years, in accordance with the IRS guidelines. (For tax year 2013, file Individual returns for tax year 2012, and Business returns for 2010, 2011, and 2012). Subject to blackout periods by the IRS.

2. Sold separately. Additional fees apply.

Welcome to ProSeries® tax software

For information about this topic...	Look here...
Getting ready	Page 1
Installing ProSeries software for stand-alone use	Page 1
Setting up the ProSeries program	Page 3
Filing returns electronically	Page 6
Installing ProSeries software for network use	Page 8
Product licensing	Page 12
Keeping your ProSeries tax products up-to-date	Page 14

Getting ready

- For assistance and current information about all aspects of getting started with ProSeries software, click the **Help** button on the ProSeries toolbar to open the Help Center or go to my.proseries.intuit.com/support.
- For information about What's New with ProSeries for the current tax year (such as form and calculation changes) refer to the **ReadMe** files located in the Help Center.
- Reminders regarding ProSeries System Requirements:
 - Windows Vista requires Service Pack 1 for minimum system requirements.
 - Windows 7 requires Service Pack 1 for minimum system requirements.
 - Windows XP requires Service Pack 3 for minimum system requirements.
 - Windows 8.1, Windows 2008 Server, and Server 2012 Standard operating systems are supported as recommended operating systems.
 - 64-bit operating systems are supported.
 - High-speed Internet connection is required for both recommended and minimum requirements.
 - Excel 2003 or later is required for Client Presentation/Client Advisor and ProSeries Tax Import add-on.
 - Internet Explorer 7.0 or later must be present in Windows, but does not need to be the default browser.
- For detailed information about current System Requirements, go to: my.proseries.intuit.com/system_req
- Windows 8 is only supported for PCs with a mouse and keyboard. Touchscreens will NOT be supported.

Installing ProSeries software for stand-alone use

You install ProSeries software from files you download from ProSeries.com (via the Internet) or from a ProSeries CD.

- 1 Close all programs.
- 2 **If you're installing from a ProSeries CD**, insert the CD into the CD drive.
If you're installing from an .EXE file that you downloaded from ProSeries.com, navigate to the location where you saved the download, then double-click the .EXE file.
- 3 In the **ProSeries Installation** dialog box, select **Install ProSeries Software**.
Tip: If you're installing from a ProSeries CD and the **ProSeries Installation** dialog box doesn't appear automatically, go to the Windows taskbar, select **Computer**, then locate your CD drive containing the

ProSeries CD. Double click on the drive to browse the files on the ProSeries CD. Now locate and double click the CDSetup to start the ProSeries installation.

- 4 Follow the instructions on the screen. Specific dialog boxes are discussed next.
- 5 If a **System Warning** dialog box appears, select **Cancel**, correct the situation identified in the dialog box, then start the installation procedure again.
- 6 In the **Software License Agreement** dialog box, select **I accept the terms of the license agreement** if you agree to accept all the terms of the ProSeries License Agreement, then select **Next**.

Important: If you find the terms of the License Agreement unacceptable, do not install the software. Select **I do not accept the terms of the license agreement**, then contact ProSeries Customer Service for a refund instead.

- 7 In the **Select an Installation Type** dialog box, select **Stand Alone**, then select **Next**.
- 8 In the **Select Destination Directory** dialog box, select **Next** to install ProSeries software in a \PROWINyy directory (where “yy” represents the last two digits of the tax year) on the drive that’s shown in the dialog box.

Tip: If you want to install ProSeries software to a different drive or directory, click **Browse**. In the **Select Folder** dialog box, select the drive you want, type the folder name \ProWinyy in the **Folder name** field (where “yy” represents the last two digits of the tax year) after the drive you selected, then select **OK**.

- 9 In the **Product Selections** dialog box, select every ProSeries tax products that you expect to use, then select **Next**.

Tip: If you used ProSeries software last year, products that were installed last year might already be selected. Products you haven’t purchased as unlimited will be installed as pay-per-return. You can install additional products later, as described in “Keeping your ProSeries tax products up-to-date” on page 13.

This section explains how to use this dialog box.

These check boxes are for federal products.

The check boxes to the right of the **Federal Products** section are for state products.

Tip: At least one federal product must be selected. If you select a state product, be sure to select the corresponding federal product.

The screenshot shows the 'Product Selections' dialog box. It has a title bar and a close button. The main area is divided into two sections: 'Federal Products' and 'State Products'. The 'Federal Products' section lists products for years 1040, 1120, 1120S, 1085, 1041, 706, 709, 990/990EZ, 1041/01, and Organizer. The 'State Products' section lists products for years 1040, 1120, 1120S, 1085, 1041. Each product has a corresponding checkbox. There are also 'Info', 'Back', 'Next', and 'Cancel' buttons at the bottom.

- 10 If any of the products you selected aren’t available, you’ll see the **Installation Note** dialog box. Review the list of products that will be installed later, then click **OK**.
- 11 Review the information in the **Installation Details** dialog box, then click **Next** to install the ProSeries tax products you selected that are available.

Important: If you see the **Installation Failed** dialog box, click **Help** to find a possible solution, then click **Exit** to exit the installation program.

- 12 **Restart Windows message.** If you are prompted to restart your computer, do so. If the installation program doesn’t resume, double-click the **ProSeries** shortcut icon on your Windows desktop to start the ProSeries program.

13 Setup Complete. If you leave the check mark in the **Launch ProSeries** option in the **Setup Complete** dialog box, the Connected Customer Wizard begins when you select **Finish**.

Tip: If you see the **ProSeries Installation** dialog box, select **Exit** to return to the Windows desktop, then start ProSeries program by double-clicking the **ProSeries** shortcut icon. The Connected Customer Wizard will begin.

Troubleshooting suggestions

If you have difficulty installing or starting the ProSeries program:

- Start your Internet browser, then go to my.proseries.intuit.com/support to search for additional troubleshooting solutions.
- If you have an issue requiring ProSeries Technical Support, go to my.proseries.intuit.com/contact_us to review all available support options. To save time, gather as much information as possible, including any error messages, before contacting chat or phone support.

Setting up the ProSeries program

The first time you start the ProSeries program, the Connected Customer Wizard helps you set up the program if there's a valid Internet connection.

- **Firm information.** Retrieves the name and address of your firm.
- **Product licensing.** Licenses your ProSeries tax software to your firm.
- **Product updates.** Downloads and applies the updates for installed products, if any.
- **New products.** Downloads and installs not-yet-installed products, if any.

Tip: If the computer doesn't have a valid Internet connection, a dialog box asks if you want to start the Internet Connection Setup Wizard. Select **Yes** to establish an Internet connection, or select **No** to establish a valid Internet connection at a later time.

Using the Connected Customer Wizard

- 1 In the **Connected Customer** dialog box, select **Next**.
- 2 Enter or verify your Customer Number and the ZIP code in the **Customer Information** dialog box, then select **Next**.

These numbers should match the Customer Number and ZIP code that are printed in the **Sold To:** area of your packing slip. If you do not have a packing slip you can verify your customer number by logging in to your **My Account** on www.proseries.com.

A different Customer Number and ZIP code might appear in the **Ship To:** area of your packing slip.

- 3 Select **Next** after the Connected Customer Wizard finishes the setup tasks.

- 4 Review the information in the **Verify Firm Information** dialog box carefully. ProSeries program prints this information on all returns prepared by your firm.
If the information is correct, select **Yes**. If the information isn't correct, select **No**. Select **Next**, then go to Step 8 if you selected **Yes** or go to Step 5 if you selected **No**.
- 5 Enter or edit your firm's name and address in the **Enter Firm Information** dialog box, then select **Next**.
- 6 The wizard transmits the updated information to an Intuit server, or a dialog box instructs you to call Customer Service. Select **OK** to continue.
- 7 Review the firm and product information in the **Product Licenses** dialog box.
- 8 If the ProSeries Update program downloads and installs products and product updates, review the status of each product **ProSeries Update** dialog box, then select **Close**.

When the Connected Customer Wizard or ProSeries Update program finishes, the ProSeries program starts. The first time the ProSeries program starts, the **Prior Year Settings Transferred** dialog box appears if the program was able to transfer the preferences and settings you used with last year's program.

Important: The **ProSeries Login** dialog box opens if (and only if) you used the Access Rights feature in last year's ProSeries program and last year's Access Rights information was transferred. Enter a valid User Name and Password, then click **OK** to proceed.

Using the Options Setup Wizard

The Options Setup Wizard usually automatically runs the first time the program starts. If it does not automatically start, click the **Help** button on the ProSeries toolbar then click **Options Setup Wizard**. The Options Setup Wizard helps you set up ProSeries options. Most Options Setup Wizard dialog boxes are self-explanatory. Note the following:

- The second dialog box asks you to select **Express Setup** or **Custom Setup**.
 - If you select **Express Setup**, you see the Options Setup Wizard dialog boxes for the ProSeries options you need to set before you complete returns.
 - If you select **Custom Setup**, you select the areas of the program you want to set up, then you see dialog boxes for those areas of the program.
- When the **Congratulations** dialog box appears, select **Finish** to save the options that you selected.

You can set up E-File options and Bank Products Enrollment/Registration Information using the Options Setup Wizard.

For more information about offering bank products through Santa Barbara Bank & Trust or Refund Advantage:

- Use the **Search Help** feature on the toolbar or in the Help Center.

The next sections discuss "Entering firm and preparer information" and "Entering global billing information" in some detail.

Tip: For information about a field in a dialog box, right mouse click the field, then select **About <Field>** on the pop-up menu.

Entering firm and preparer information

If you completed the Connected Customer Wizard, you'll see your firm's name and address in the gray area of the **Firm Information** section.

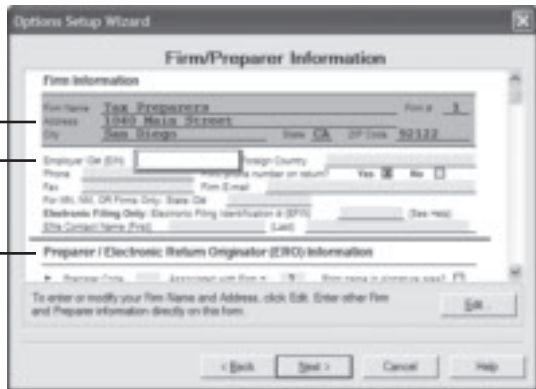
Enter other information about your firm in the fields below the gray area. If the firm will be filing returns electronically, enter the firm's Electronic Filing Identification Number (EFIN) and the name of the person that ProSeries Technical Support can contact if necessary.

During the product licensing procedure, your firm's name and address are retrieved from an Intuit Internet server, then entered here.

Enter other information about your firm here.

Enter preparer and ERO information in this section.

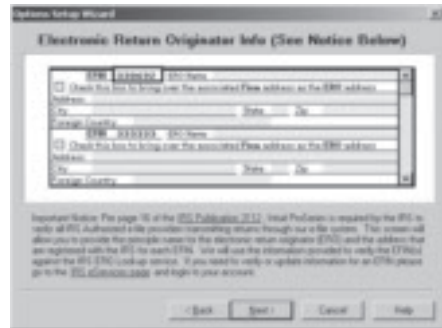
To move to new fields, press ENTER or TAB, or use your mouse.



Enter information about each of the firm's preparers in the **Preparer / Electronic Return Originator (ERO) Information** section of the dialog box. If preparers will be filing returns electronically, also enter the ERO Practitioner PIN in this section.

Important: When an Electronic Filing Identification Number (EFIN) is entered for either the firm or a preparer, you will also be required to verify the Electronic Return Originator name and address that are registered with the IRS. Intuit uses this information to verify IRS Authorized e-file providers so the information provided must match the IRS ERO records.

Tip: If the ProSeries program transferred preparer information from last year's program, just edit the information as necessary.

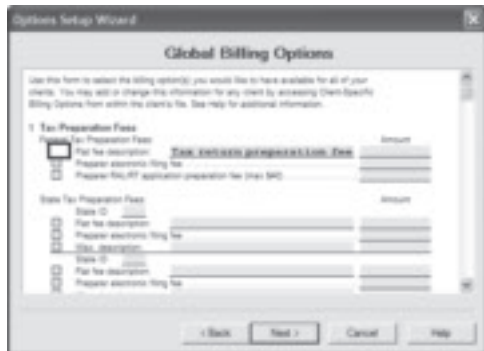


Entering global billing information

Use the **Global Billing Options** dialog box to set the billing options that you want to use for all clients. If the ProSeries program transferred global billing information from last year's program, just edit the information as necessary.

This dialog box helps you set up:

- 1 Tax Preparation Fees
- 2 Hourly Charges
- 3 Per Form Charges
- 4 Miscellaneous Fees and Adjustments
- 5 Discounts
- 6 Sales Taxes
- 7 Standard Paragraphs

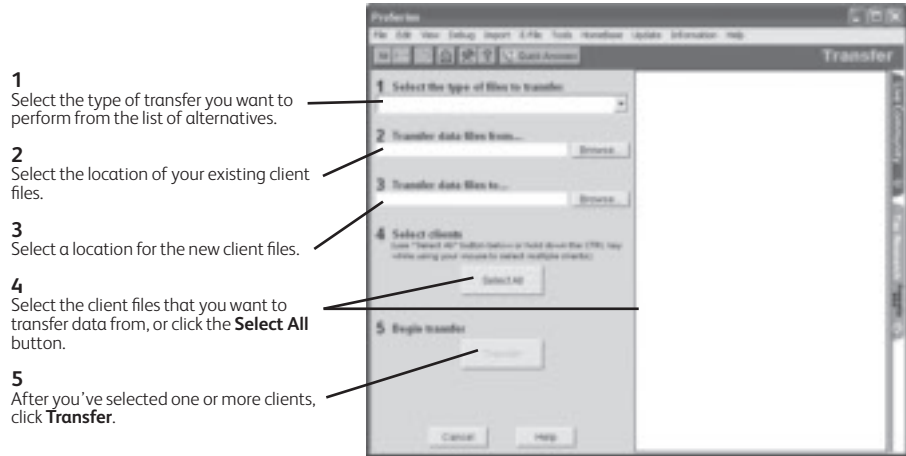


Transferring data from last year's ProSeries client files

The first time you start the ProSeries program, you can transfer relevant data from last year's client files to new ProSeries client files for this year. If you used ProSeries software last year, select **Yes** to go to the **Transfer** window, then do the five steps listed on the left side of the **Transfer** window.

Electronic filing. If last year's return was marked for electronic filing, that selection is transferred to this year's return.

Important: If your firm will be filing returns electronically from more than one stand-alone computer, and each computer is using the same EFIN, change the starting number in the DCN counter in the **Electronic Filing** section of the **Options** dialog box in the ProSeries program on all but one computer before opening any returns. See "If more than one computer will be using the same EFIN" on page 7.



The **Transfer Log** dialog box opens when the ProSeries program finishes transferring client data. Review the information, then select **Close** to go to HomeBase.

Filing returns electronically

ProSeries/Electronic Filing is installed with ProSeries tax products that support e-filing. To e-file returns in ProSeries, you must be an Authorized IRS e-file Provider with a valid IRS issued EFIN. We only accept and transmit returns from Authorized IRS e-file Providers, set forth in IRS Publications 3112 and 1345. For more details about e-filing:

- Got to my.proseries.intuit.com/efile_resource_center, or
- Use the Search Help feature on the Help toolbar or in the Help Center, or
- Click the **Help** button on the toolbar, select **User's Guide** in the Help Center, then go to chapter 20, "Electronic Filing."



Establishing an Internet connection

To e-file, the computer on which the ProSeries program is installed must be able to connect to the Internet. If you don't have an Internet connection, you must first sign up for service with an Internet Service Provider (ISP). Once you have an ISP, go to the **Help** menu, select **Internet Connection Setup**, then follow the on-screen instructions.

Setting up the ProSeries program for electronic filing

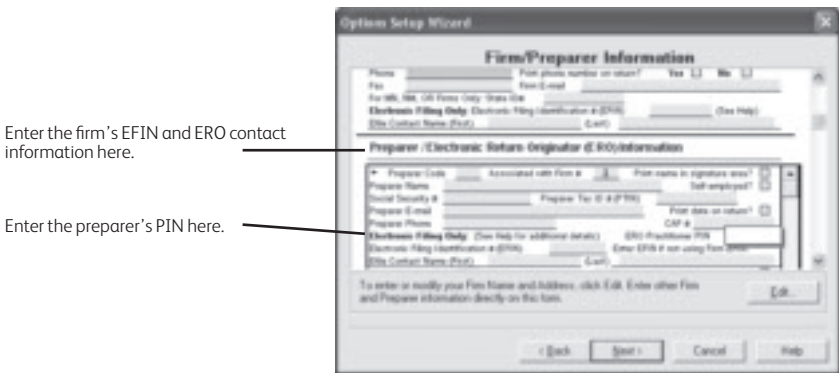
Take the following steps to set up the ProSeries electronic filing options.

- 1 Go to the **Help** menu and select **Options Setup Wizard**.
- 2 In the first **Options Setup Wizard** dialog box, select **Express Setup**.
- 3 **EFINs**. In the **Firm/Preparer Information** dialog box, enter the firm's Electronic Filing Identification Number (EFIN) in the **Firm Information** section.

After you enter an EFIN, complete the corresponding **Efile Contact Name** fields.

PINs. PINs (Personal Identification Numbers) are used as electronic signatures. Enter each preparer's PIN in the **ERO Practitioner PIN** field. A Practitioner PIN is any five-digit code (except all zeros) chosen by each preparer.

Important: The IRS requires that tax practitioners e-file individual income tax returns with Practitioner PINs or taxpayer Self-Select PINs. Tax practitioners can't submit a paper signature for e-filed returns by using Form 8453 anymore. A redesigned Form 8453 is used only to transmit required supporting paper documents.



- 4 In the **Filing Client Returns Electronically** dialog box, select **Yes, some returns may be filed electronically**.
- 5 Complete the **Electronic Return Originator Info** screen by providing the ERO Name and address that are registered with the IRS for each EFIN entered in ProSeries.
- 6 Complete the remainder of the Options Setup Wizard.



Installing ProSeries software for network use

Installing and setting up ProSeries software for network use involves the following three steps:

- **Step 1: Install to this computer (ADMIN workstation)**
- **Step 2: Complete Licensing (Connected Customer)**
- **Step 3: Install to other network computers (USER workstations)**

Note that certain details vary from system to system. If you have additional questions about network installation:

- 1 Start your Internet browser, then go to <http://www.proseries.com>.
- 2 From the ProSeries.com home page, select **Support**.
- 3 Type a question in the **Ask ProSeries** field, then select **Search**.

Tip: If you want help optimizing ProSeries software on your network, go to http://www.proseries.com/contact_us to review all available support options.

Prepare your networked computer system

Before you can install ProSeries software, you must prepare your networked computer system. The specific steps appropriate for your system depend on the type of network and the way it's set up. The table below explains some network-related terms.

Term	Explanation
Client-server network	A network setup where only one computer (the server) shares resources used by one or more workstations (the clients).
Peer-to-peer network	Up to 10 computers that are linked together. One or more systems may share resources.
Mapped drive	Any drive or shared resource that has a drive letter assigned to it.
ProSeries ADMIN workstation	The computer from which ProSeries software is installed to the server or serving computer. You can designate any computer to be the ProSeries ADMIN workstation (including the network administrator's computer), but once you choose a ProSeries ADMIN workstation, it should remain the ProSeries ADMIN workstation throughout the tax season.
ProSeries User workstation	A computer that runs the ProSeries program and accesses the ProSeries network components from the shared folder.
Shared folder	The folder that is set up by the Network Administrator to be shared in the network system. The ProSeries shared folder is the location where ProSeries network components and client files reside.)
Primary file location	This is the location where the program stores all current-year client files. This location can be set only from the ProSeries ADMIN workstation.

For instructions related to shared folders, mapped drives, rights, and permissions, refer to the documentation for your operating system and/or network software. If you have additional questions about preparing your networked system for the network version of ProSeries, go to <http://www.proseries.com>, select **Support**, type a question in the **Ask ProSeries** field, then select **Search**.

Take the following steps before you begin the ProSeries installation procedure.

- 1 Decide which drive on the server (if a client-server network) or the serving computer (if a peer-to-peer network) you will install ProSeries shared network components.

- 2 On the drive you chose, create a folder named **ProSeries**.
- 3 Make the **ProSeries** folder a shared folder, and assign it the name “ProSeries.”
- 4 Within the **ProSeries** folder, create a folder named **ProNetyy** (where “yy” represents the last two digits of the tax year).
- 5 Decide which computer will be the ProSeries ADMIN workstation. Use the following information to help you decide.
 - **Internet access.** An Internet connection is required.
 - **If a client-server network.** You install ProSeries software from the ProSeries ADMIN workstation to the server’s hard drive. The ProSeries ADMIN workstation and the server are two different computers. The ProSeries ADMIN workstation can be used as a workstation, but the server is **not** used as a workstation because doing so can degrade network performance.
 - **If a peer-to-peer network.** You install ProSeries software on the ProSeries ADMIN workstation’s hard drive. The ProSeries ADMIN workstation can be used as a workstation.
 - **Rights.** The ADMIN workstation is the only computer that has rights to at least some aspects of the following features: Product Updating, Customer Information, Primary File Location, Firm Name and Address, Master Password, Electronic Filing Password, Bank Products Registration Information, Database Maintenance, and HomeBase Tune-up.
- 6 Make sure a drive is mapped to the **ProSeries** folder on the server or serving computer. Make sure the ProSeries ADMIN workstation has the appropriate rights and permissions.
- 7 Go to each computer that will serve as a ProSeries User workstation, then make sure a drive is mapped to the **ProSeries** folder on the server or serving computer. Make sure each User workstation has the appropriate rights and permissions.

Map drive factors to consider

We recommend you use mapped drives (rather than UNC), and that the drive with the ProSeries shared network components be mapped to the same drive letter for all workstations.

Mapped to same drive letter. If you’re an existing ProSeries network user and have all computers mapped to the same drive letter, you don’t have to change anything. Install ProSeries software as you did in prior years.

Mapped to different drive letters. If all of your workstations are mapped to a network shared folder using different drive letters, you don’t have to re-map the workstations.

New computers. If you’re an existing ProSeries network user and you’ve added new computers to your network, we recommend you set them up the same way as the existing workstations on your network.

New user. If you are installing ProSeries software for the first time, you can install ProSeries shared network components directly to a shared folder without mapping drives. You can run the workstation installation and setup from all other computers by accessing this shared folder.

UNC instead of mapped drives. UNC stands for “Universal Naming Convention” or “Uniform Naming Convention.” UNC uses the following format:

```
\\server-name\shared-folder-path
```

If you use UNC instead of mapped drives, the shared folder doesn’t have to be mapped to a network letter as long as all workstations can access the shared folder. However, if you use UNC instead of mapped drives, you must use UNC exclusively.

Step 1 and Step 2: Install and set up ProSeries software from the ADMIN workstation

Installing ProSeries software from the ADMIN workstation for network use is similar to installing ProSeries software for stand-alone use **with the following exceptions**:

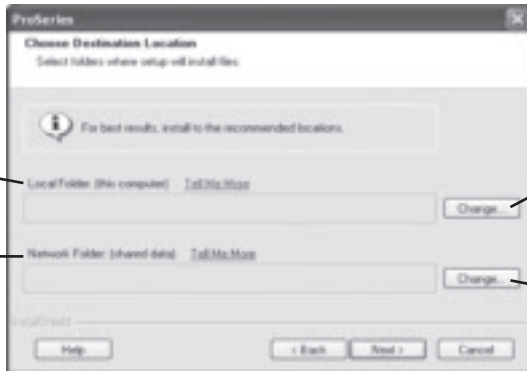
- 1 In the **Select an Installation Type** dialog box, select **Network**, then select **Next**.
- 2 When the **Review Network Installation Steps** dialog box appears, review the summary of the three steps required for network installation, then click **Next**.
- 3 In the **Computer Name** dialog box, enter a name for the current workstation (such as the name of the person who typically uses the workstation), then click **Next**.
- 4 In the **Choose Destination Location** dialog box, accept the recommended locations for the **Local Folder** and **Network Folder** unless:
 - **Local Folder.** You want the **ProWinYY** folder (where “YY” represents the last two digits of the tax year) on a local drive other than C:\.
 - **Network Folder.** If the suggested location isn’t appropriate or the **Network Folder** field is blank, select the **ProNetYY** folder (where “YY” represents the last two digits of the tax year) within the **ProSeries** folder that you created on the server or serving computer.

If you accept:

* The location shown in the **Local Folder** field, and

* The location shown in the **Network Folder** field (if a location is shown), then

Click **Next**.



If you want to select a different local location, click this **Change** button.

If you want to enter or select a different network location, click this **Change** button.

If you accept the recommended folders, click **Next** and proceed to Step 5.

If you don’t accept the Local Folder:

- a. Select the local drive where you want to install the ProSeries program.
- b. Go to the **Path** field, type ProWinYY (where you type the last two digits of the tax year in place of “YY”) after the drive that you selected, then click **OK**. If you are prompted to create the ProWinYY folder, click **Yes**.
- c. Continue with Step 5.

If you don’t accept the Network Folder:

- a. Select the drive where you want to install the ProSeries shared network components.
 - b. Go to the **Path** field, then type “ProSeries\ProNetYY” (where you type the last two digits of the tax year in place of “YY”) after the drive you selected, then click **OK**. If you are prompted to create the ProSeries or ProNetYY folder on the drive that you’ve selected, click **Yes**.
 - c. Continue with Step 5.
- 5 When the **Step 2: Complete Licensing (Connected Customer)** dialog box appears, review the summary of the next steps, then click **Next**.

- 6 Connected Customer Wizard.** If the product licensing information that was downloaded by the Connected Customer Wizard didn't include a Network License. You'll see the **Your Network License is Missing** dialog box.
- Select **License Now** then call Customer Service to resolve the issue, or
 - Select **Continue without licensing** then click **OK**.
- 7 User workstation installation instructions.** Click Print so you can refer to a printed copy of the instructions while you are installing the software and setting up each user workstation.

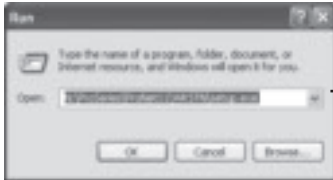
Step 3: Set up each ProSeries User workstation

Installing ProSeries software to each workstation is similar to installing ProSeries software for stand-alone use **with the following exceptions:**

From each ProSeries User workstation:

- 1 Go to the Windows taskbar, click **Start**, select **Run**, enter the path that's identified in the User workstation installation instructions, then click **OK**.

Tip: That path will probably be **x:\ProSeries\ProNetYY\WKSTN\setup.exe**, where **x** represents a drive on your system (but not necessarily Drive X), and "YY" represents the last two digits of the current tax year.

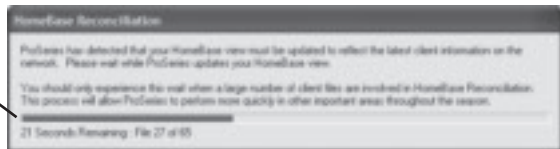


This example shows a path that starts with Drive N.

This field is not case sensitive. Letters can be upper-case or lower-case.

- 2 Follow the instructions on the screen.
- 3 In the **Choose Destination Location** dialog box, accept **C:\ProWinYY** as the recommended location for the **Local Folder**, or select a different local drive for the **ProWinYY** folder (where YY represents the last two digits of the tax year).
- 4 In the **Computer Name** dialog box, enter a name for the User workstation (such as the name of the person who typically uses the workstation), then click **Next**.
- 5 The **HomeBase Reconciliation** dialog box appears if the ProSeries program detects that the HomeBase database on the User workstation needs to be updated with the latest information in the client files stored with the shared network components.

This progress bar keeps you informed about status of the HomeBase Reconciliation operation.



- 6 **Network License.** If the product licensing information that was downloaded by the Connected Customer Wizard didn't include a Network License, follow the instructions in the **Network License Missing** dialog box to resolve the situation.

Important: You can't print or e-file returns until your ProSeries software is licensed.

Product licensing

Product licensing is a system that licenses your ProSeries tax software to your firm. Product licensing is required before you can print returns, file returns electronically, or create PDF files that contain returns. Products that aren't licensed for unlimited use can be used on a pay-per-return basis.

Product licensing uses your Customer Number and ZIP code with information in Intuit's records to deliver the following to your ProSeries tax software:

- An unlimited-use license for each ProSeries tax product and ProSeries electronic filing product that you've purchased for unlimited use—even if those products haven't been installed yet
- Your firm's name and address
- A network license (if you purchased ProSeries/Network Version)

Tip: You can make minor changes to your firm's name and address (such as changing "Dr." to "Drive") after ProSeries product licensing has occurred.

ProSeries product licensing can be performed using the Online method or the Manual method. For most ProSeries users, product licensing occurs online automatically.

Automatic, Online product licensing

The Connected Customer Wizard performs product licensing automatically when:

- You install ProSeries tax software for stand-alone use on a computer that has an Internet connection
- You install ProSeries tax software for network use from a computer (referred to as the ProSeries Admin workstation) that has an Internet connection

Important: When ProSeries is installed for network use, product licensing must be initiated from the ProSeries Admin workstation. Product licensing information is shared by all computers that have been set up as ProSeries workstations.

Be sure to read "Keeping your ProSeries tax products up-to-date" on page 14 of this guide.

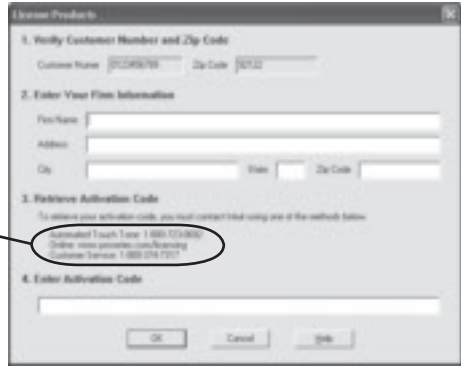
Product licensing using the Manual method

If automatic, Online product licensing hasn't been performed (as explained above), you'll see the message "Product Licensing Required" in the HomeBase Message Center. When you click that message, you see a **License Products** dialog box that includes two options: **Online (Recommended)** and **Manual**. Select **Manual**, then select **OK**. You'll see the **License Products** dialog box shown below.

Tip: Ways that you can contact Intuit for manual product licensing include:

- **Automated Touch Tone phone service** (call 1-800-723-0692)
- **Online service** (go to <http://www.proseries.com>, then select **Product Licensing**)

- 1 Verify your Customer Number and ZIP code.
- 2 Enter your firm's name and address. (This information must match the information contained in Intuit's records.)
- 3 Contact Intuit using one of three methods. You will receive a unique Activation Code from Intuit.
- 4 Enter the Activation Code, then click **OK**.



Be sure to read “Keeping your ProSeries tax products up-to-date” below.

Product licensing with multiple, non-Internet computers

If you installed ProSeries for stand-alone use on computers that don't have an Internet connection and you don't want to perform product licensing for each computer using the Manual method, here's a convenient way to copy your firm's product licensing information from one computer to other computers.

- 1 From the computer with your firm's product licensing information, go to the **File** menu, select **Copy Product License**, then use the dialog box to save the product license file to a network location or removable media (such as a flash drive).
- 2 From each computer that requires product licensing, go to the **File** menu, select **Retrieve Product License**, then use the dialog box to retrieve the product license file that you copied to the network location or removable media.

Tip: Repeat this procedure if you update the firm's product licensing information.

Updating your firm's product licensing information

Update your firm's product licensing information when:

- You purchase additional ProSeries tax products or additional ProSeries electronic filing products for Unlimited use, or
- You purchase ProSeries/Network Version, or
- The software or an Intuit ProSeries representative instructs you to update your product license information

If either of these situations occur, go to the **Tools** menu, select **License Products**, select **Online**, select **OK**, then simply wait for the product licensing procedure to conclude.

Tip: If the computer isn't connected to the Internet, go to the **Tools** menu, select **License Products**, select **Manual**, select **OK**, then follow the instructions in the **License Products** dialog box shown on page 12.

For more information about product licensing:

- Use the Search Help feature on the Help toolbar or in the Help Center, or
- Click the **Help** button on the toolbar, select **User's Guide** in the Help Center, then go to chapter 4, “Setting Up ProSeries Features.”



Keeping your ProSeries tax products up-to-date

As soon as a ProSeries tax product or tax product update becomes available, it is posted to a ProSeries Internet server. Getting products and updates via the Internet helps you have the most up-to-date versions of the tax products you use.

Network: Most product updating activities must be performed from the ProSeries ADMIN workstation.

Task Scheduler

Use the **Task Scheduler** to **Save time** and never miss a critical update by scheduling selected tasks to run automatically. Your computer must be running and connected to the Internet when tasks are scheduled to run.

Using the Task Scheduler program

- 1 In ProSeries, go to the **Tools** menu, select **Options**, then select **Task Scheduler**.
- 2 Make sure the **Download New/Update Existing Products** task is enabled.
- 3 To change the Task Scheduler schedule, select **Modify**.

Using the ProSeries Update menu

- 1 In ProSeries, go to the **Update** menu and select **Update Installed Products** if you don't want to select additional products for installation.
- 2 In ProSeries, go to the **Update** menu and select **Select and Download New Products** if you want to select additional products for installation.

Tip: If ProSeries isn't running, click the **Start** button on the Windows desktop, select **Programs**, select **ProSeries**, then select **ProSeries Update**.

Contacting ProSeries Sales and Customer Service

ProSeries Sales is available year-round to take your order and provide product information at **1-800-934-1040**

ProSeries Customer Service and Technical Support are available to answer questions about the product and your order. For information on support hours and how to contact support go to **my.proseries.intuit.com/support** and search the knowledgebase for 'support hours'.

Save Time using Keyboard Shortcuts

You can even refer to this same list of top keyboard shortcuts while working in ProSeries by selecting **Alt S**.

These are the top 20 shortcuts

Ctrl A	Calculator	Ctrl M	Go to QuickEntry Mode	F1	Program Help	F8	Mark as Estimated
Ctrl D	Override	Ctrl Q	QuickZoom	F4	Tax Help	F9	Calculate return
Ctrl E	Return Errors	Ctrl U	Forms in Use	F5	Final Review	F10	Save Tax Return
Ctrl G	Go to State/City	Ctrl →	Next Form in Use	F6	Select Form	F11	Add/Edit Missing Client Info
Ctrl J	Find	Ctrl ←	Previous Form in Use	F7	Find Next Error	Tab	Go to Next Field

These are the remaining shortcuts that work inside a return

Ctrl B	Billing Clock	Ctrl S	Save Client	Ctrl F2	Go to Parked Window	Shift Tab	Go to Previous Field
Ctrl C	Copy	Ctrl T	Tax Summary	Ctrl F3	Sort Data in Table	Shift F1	Help
Ctrl F	Select Form	Ctrl V	Paste	Ctrl F6	Select/Create Multiple Copy	Alt F4	Exit
Ctrl K	K-1 Summary	Ctrl W	Remove Form	Ctrl Shift F	Find/List Notes	Ctrl New	Top of Form
Ctrl L	Trial Balance Import	Ctrl X	Cut	Ctrl Shift J	Find Again	Ctrl End	Bottom of Form
Ctrl N	New Client	Ctrl Y	Print Options	Ctrl Shift L	Select Line	PgUp	Page Up
Ctrl O	Open Client	Ctrl Z	Undo	Ctrl Shift N	Add/Edit Note	PgDn	Page Down
Ctrl P	Print Client			Ctrl Shift R	Trial Balance Reverse Sign	New	Front of Field
				Ctrl Shift S	Supporting Statements	End	End of Field

These are the shortcuts that work from HomeBase

Ctrl N	New Client	Ctrl P	Print Client	F11	Add/Edit Missing Client Info
Ctrl O	Open Client	Ctrl Y	Print Options	F12	EF Reports (EF View Only)
Alt F11	Client Snapshot	Ctrl A	Calculator	F5	Refresh View
Alt J	Find	F1	Program Help	Alt F5	Resync Database (Network Only)

